



Anterior View



Left Lateral
View



Posterior View

Product Overview

The LSO Flex Foam® 1 - Bivalve opening allows for tightening on both sides, connecting the anterior and posterior. The low profile orthosis allows compression, expansion, adjustability and good lateral control.

Spinal Indications

- Post-Operative Lumbar Surgery
- Degenerative Disc Disease
- Spondylolysis
- Spondylolisthesis
- Spinal Stenosis
- Compression Fracture
- Herniated Disc
- Low Back Pain

Features

- Bivalve design allows for maximum anterior and posterior control.
- Accommodates volume changes.
- Sternal shield can be added to control flexion or enhance an extension force.

Bivalve Opening: Overlap Options & Configurations

Bivalve Opening Overlap Options:

Smooth Overlap (Pictured), Step Overlap, With Tongues

Bivalve Configurations:

Anterior over Posterior, Anterior into Posterior

Product Options

Recommended Plastic

Copolymer (CP) 1/8" or 5/32" depending on patient size (Call for available color options)

Available Plastics

Polyethylene (PE) 3/32", 1/8", 5/32", 3/16" (Least Rigid)

Modified Polyethylene (MPE) 1/8", 5/32", 3/16" (Semi Rigid) (if Transfer pattern is requested)

Standard Flex Foam® Liner

1/4" (soft) x 1/8" (firm)

Other Liner Thickness Available

3/16" (soft) x 1/8" (firm)

1/8" (soft) x 1/8" (firm)

Spinal Reliefs

Surgical relief (wide and gradual)

Spinous Process (narrow)

Sternal Extensions

Sternal Shield (axilla or shoulder straps)

Cow Horns

C.A.S.H. Pad - Cruciform Anterior Spinal Hyperextension (articulating pectoral pads)

Loops & Chafes

Plastic Loop and Chafe

Extended Plastic Chafe

Extended Dacron Chafe

Fasteners

Screws and Barrel Nuts

Speedy Rivets

Send your orders to:
orders@spinaltech.com

Send your CAD files to:
cad@spinaltech.com

3.24

Flex Foam® 1 - Overlap Options



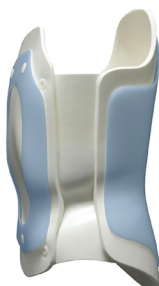
Bivalve Flex Foam® I
- Anterior into
posterior trim foam



Anterior over
posterior trim foam



Anterior into
posterior foam
overlapping foam



Open with tongues



Anterior over
posterior foam
overlapping foam

Send your orders to:
orders@spinaltech.com

Send your CAD files to:
cad@spinaltech.com

3.24