

# Spinal Technology Prosthetics

## TRANSTIBIAL DIAGNOSTIC SOCKET FABRICATION FORM

FACILITY: \_\_\_\_\_  
ADDRESS: \_\_\_\_\_  
CITY: \_\_\_\_\_ STATE: \_\_\_\_\_  
ZIP: \_\_\_\_\_ PHONE: \_\_\_\_/\_\_\_\_/\_\_\_\_  
PRACTITIONER: \_\_\_\_\_  
E-MAIL: \_\_\_\_\_

PATIENT'S NAME: \_\_\_\_\_  
 LEFT       RIGHT       BILATERAL  
AGE: \_\_\_\_\_ SEX: \_\_\_\_\_ HGT: \_\_\_\_\_ WGT: \_\_\_\_\_  
COLOR: \_\_\_\_\_ SWATCH #: \_\_\_\_\_  
ACTIVITY LEVEL: \_\_\_\_\_

P.O. #: \_\_\_\_\_ ORDER DATE: \_\_\_\_\_ DATE NEEDED: \_\_\_\_\_ SHIP METHOD: \_\_\_\_\_

### FABRICATION

#### (1) NEGATIVE MODEL

- Open Scan and modify
- Open modified scan
- Image and modify

#### (3) SOCKET MATERIAL

- Vivak
- Thermolyn Stiff
- Polypropylene

#### (5) DISTAL ATTACHMENT

- Base plate (FHLA-6)
- Suction plate (FHLA-10K)
- Barb suction plate (FHLA-25)
- Other:

#### (2) TRANSTIBIAL BRIM DESIGN

- PTB
- TSB
- RCR
- SUPRA CONDYLAR
- OTHER

#### (4) TRANSTIBIAL SUSPENSION

- Prep for Bulldog lock (mark button side)
- Suction:
- Other:

#### (6) ALIGNMENT ATTACHMENT

- Set up on alignable RED unit
- Set up on components provided

#### Componentry Disclaimer:

We recommend that you provide components. We can prep the socket to accept drop-in components. If we provide any items, we will bill the item at cost plus a 15% handling fee.

### ADDITIONAL INSTRUCTIONS

Submit orders to [ProstheticOrders@SpinalTech.com](mailto:ProstheticOrders@SpinalTech.com)

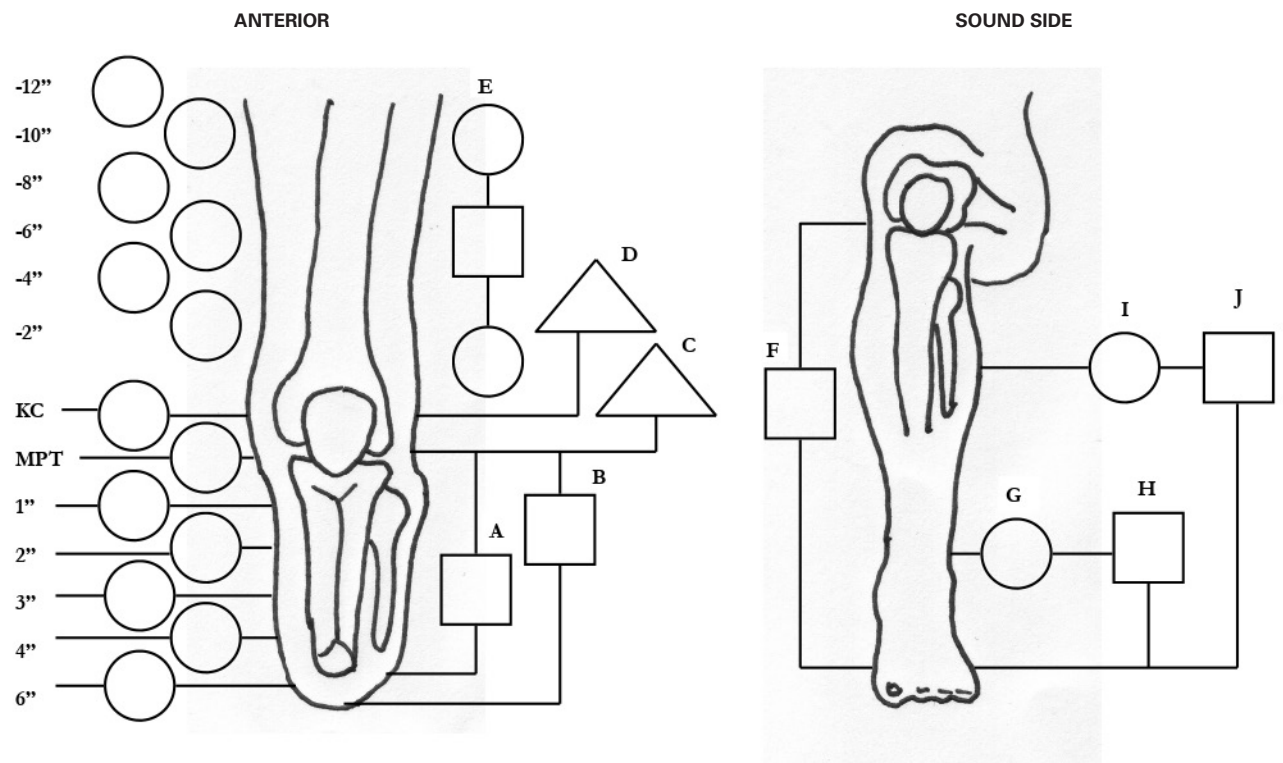
Spinal.Tech/Prosthetics

Follow Us    



8075 National Turnpike,  
Louisville, KY 40214  
(855) 569-3754

## PATIENT MEASUREMENTS



**DISTAL END CONTOUR:**

- ROUND
- FLAT
- CONICAL

- A. MPT TO DISTAL TIBIA
- B. MPT TO DISTAL END (UNCOMPRESSED)
- C. AP @ MTP
- D. ML @ KNEE CENTER
- E. CORSET MEASUREMENTS
- F. MPT TO FLOOR

- G. ANKLE CIRCUMFERENCE
- H. HEIGHT OF ANKLE
- I. CALF CIRCUMFERENCE
- J. HEIGHT OF CALF

### ADDITIONAL INSTRUCTIONS

Submit orders to [ProstheticOrders@SpinalTech.com](mailto:ProstheticOrders@SpinalTech.com)